

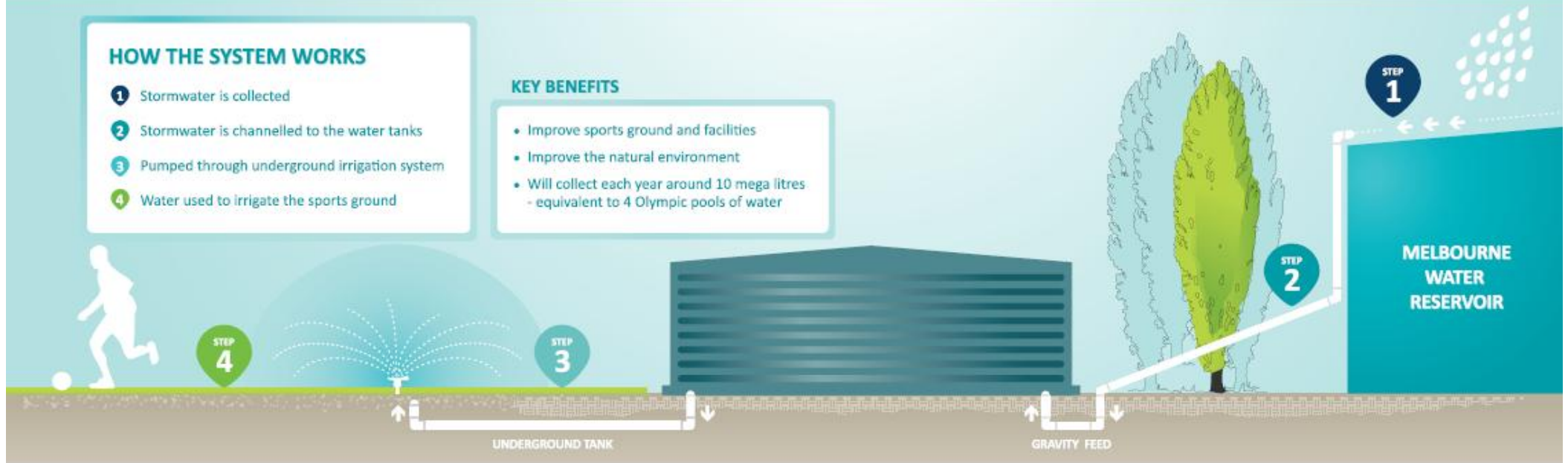
MOUNT WAVERLEY RESERVE STORMWATER HARVESTING & REUSE PROJECT

HOW THE SYSTEM WORKS

- 1 Stormwater is collected
- 2 Stormwater is channelled to the water tanks
- 3 Pumped through underground irrigation system
- 4 Water used to irrigate the sports ground

KEY BENEFITS

- Improve sports ground and facilities
- Improve the natural environment
- Will collect each year around 10 mega litres - equivalent to 4 Olympic pools of water



www.monash.vic.gov.au

