



HUME CITY COUNCIL **Cleaner Creeks: Everyone's Business**

**Claire Fenby, Environmental Planning
& Compliance Officer**



Project Drivers

- A cleaner Merri Creek



Project Drivers

- Industrial waterway pollution incidents

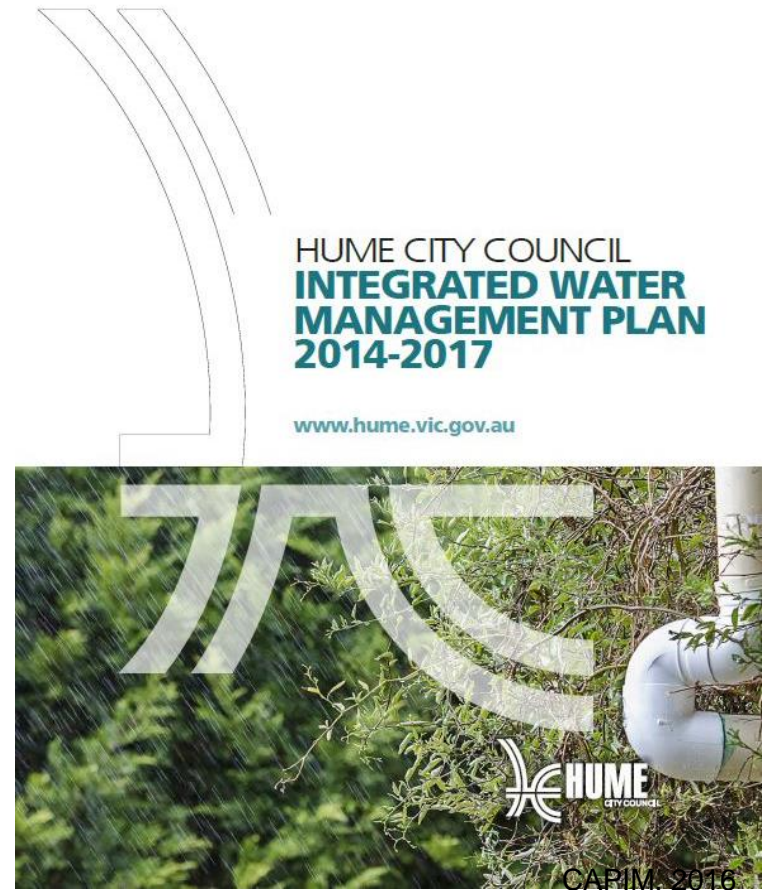
N. Garmiston, 2015



CAPIM, 2016

Project Drivers

- A commitment to provide water education to industrial communities



Project Drivers

- Targeting a gap in planning controls

HUME PLANNING SCHEME

22.19
02/05/2013
C157

INDUSTRIAL STORMWATER MANAGEMENT POLICY

This policy applies to applications for:

- Industry.
- Warehouse.
- Subdivision for Industry and Warehouse.
- This policy does not apply to an application for:
 - An extension or alteration of an existing building of less than 50 square metres in floor area.
 - Subdivision of an existing building.

Project Overview

Map of project hotspots removed as project is ongoing.
Contact Council for spatial information.

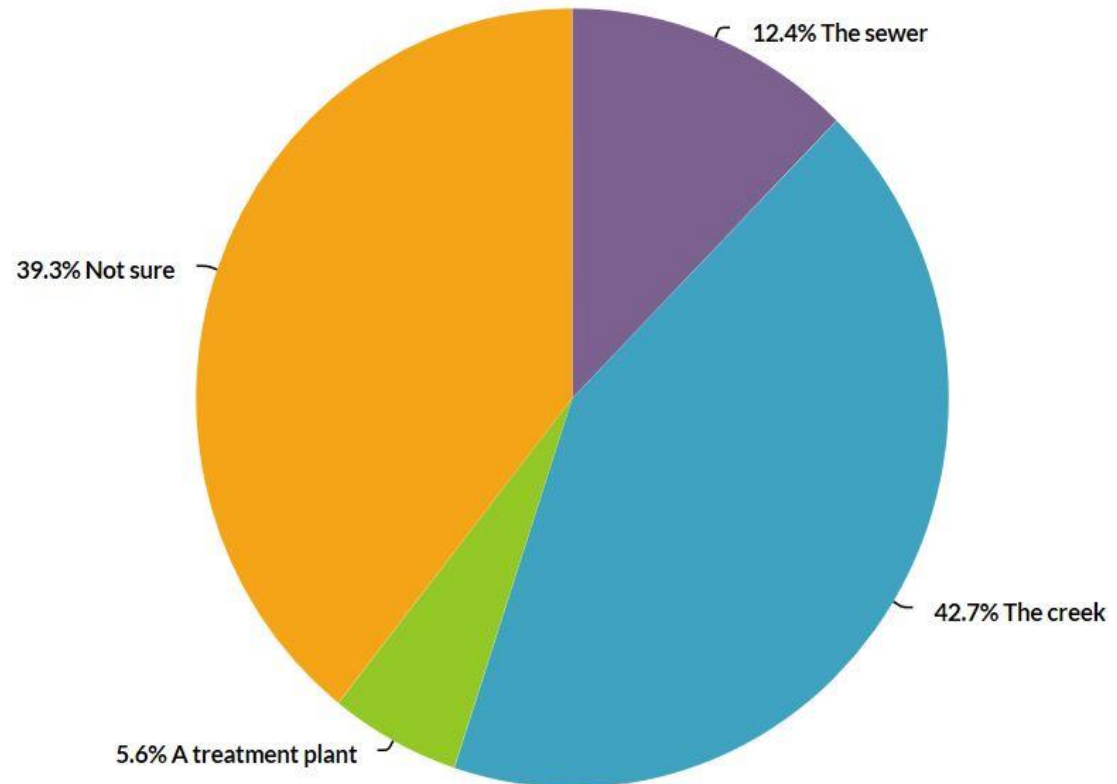
- A desktop study – identifying ‘hot spots’ of auto wreckers and materials recycling businesses.
- Water quality testing at 10 stormwater drain locations and 3 creek outfalls for heavy metals and hydrocarbons – baseline and impact.
- Face-to-face education visits at 220 businesses during the 2016 education program. Discussed stormwater knowledge, site-specific management practices.
- Provided an educational flyer, comprising illustrative pictures of good / bad site management and written in Plain English.

Project Approaches – Education is Key!

**Do you know where
the stormwater
drains go to?**

Correct Answer: 42.7%

Incorrect Answer: 57.3%

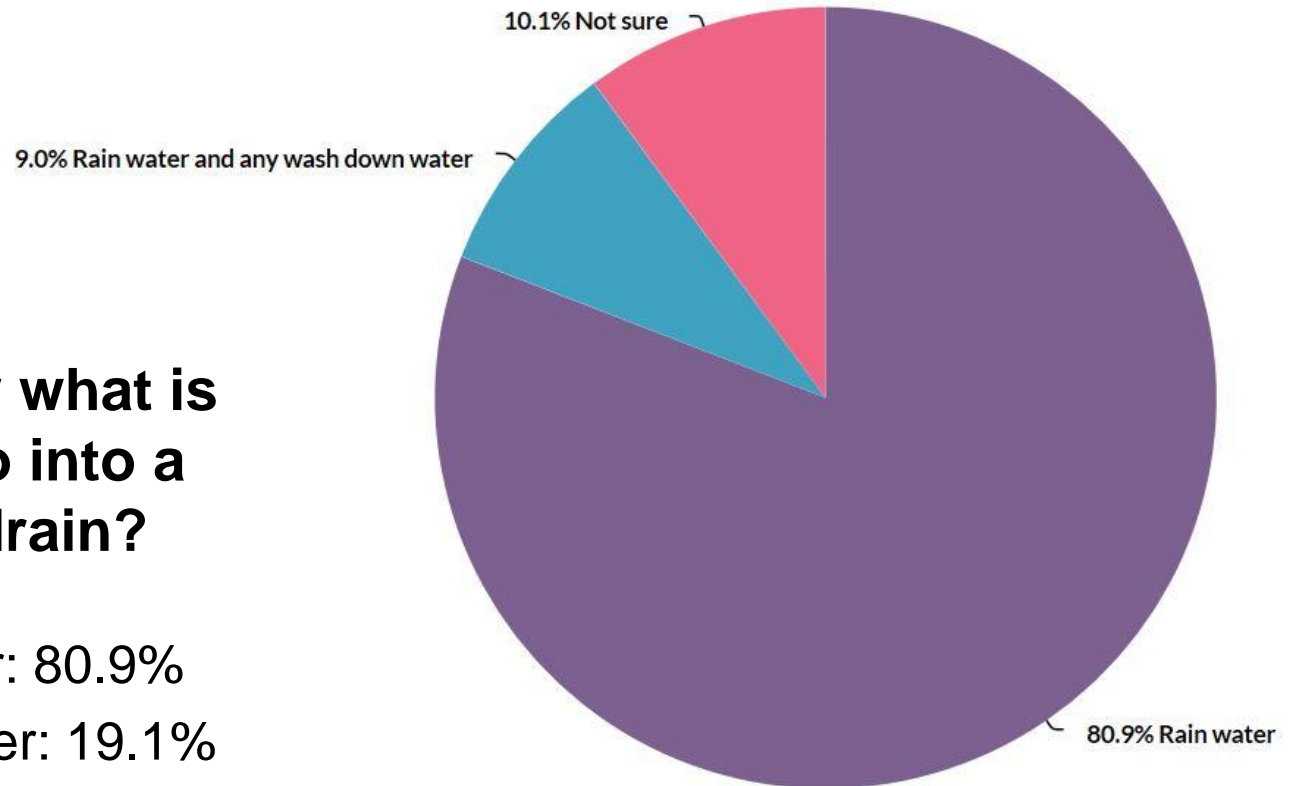


Project Approaches – Education is Key!

**Do you know what is
allowed to go into a
stormwater drain?**

Correct Answer: 80.9%

Incorrect Answer: 19.1%



HUME CITY COUNCIL CLEANER CREEKS Everyone's Business

Did you know that stormwater run-off from our businesses, roads and car parks drains into our creeks, rivers and oceans? Good business practice will help protect our valuable waterways, and that's good for everyone.

The Drains are Just For Rain

- Rain from the street, your roof, yard and car park goes into our stormwater drains. This stormwater goes into Merri Creek, the Yarra River and Port Phillip Bay.
- No rubbish, oil, detergent, sand, paint, metals or other materials are allowed in stormwater drains. To protect our creeks, make sure your business has the correct sumps, pollutant traps, bunds or sewer connections where they are needed.
- Vehicle and equipment washing must be done in covered and bunded wash-down bays. Wash-down bays must connect to a sump or the sewer with a trade waste agreement.



Keep Your Nature Strip & Garden Beds Tidy

- No materials can be dumped or stored on nature strips or in garden beds. Materials must be stored appropriately within your own property.
- Clean nature strips and garden beds means less pollution in our soil, drains, creeks.



Store Material Properly

- Keep waste in bins and skips, and keep all bins and skips closed. This keeps your property clean and stops rubbish from entering our water, air and soil.
- Materials from open or broken bins, skips, packaging or containers can be blown into drains and creeks.
- Regularly check packaging and containers to make sure they aren't broken.
- Make sure bins and skips are collected regularly, to reduce the build-up of waste.



Prevent & Clean Up Spills

- Clean up any spills immediately – big or small – using the spill kit kept on site.
- Keep a spill kit close to stored bulk liquids and where liquids are used on your site.
- Store bulk liquids in appropriate bunding.
- Make sure current and new staff know how to use the spill kit.



This Project has been assisted by the Victorian Government through Melbourne Water Corporation as part of the Living Rivers Stormwater Program

For more advice on how your business can help keep our waterways clean, contact Hume's Sustainable Environment Department on 9205 2200.

Passive Sampling

10 'Suspended Particle Samplers' were deployed into drainage pits across Campbellfield and Craigieburn. These were replaced weekly, for four weeks. Sampling took place in April, August & October.

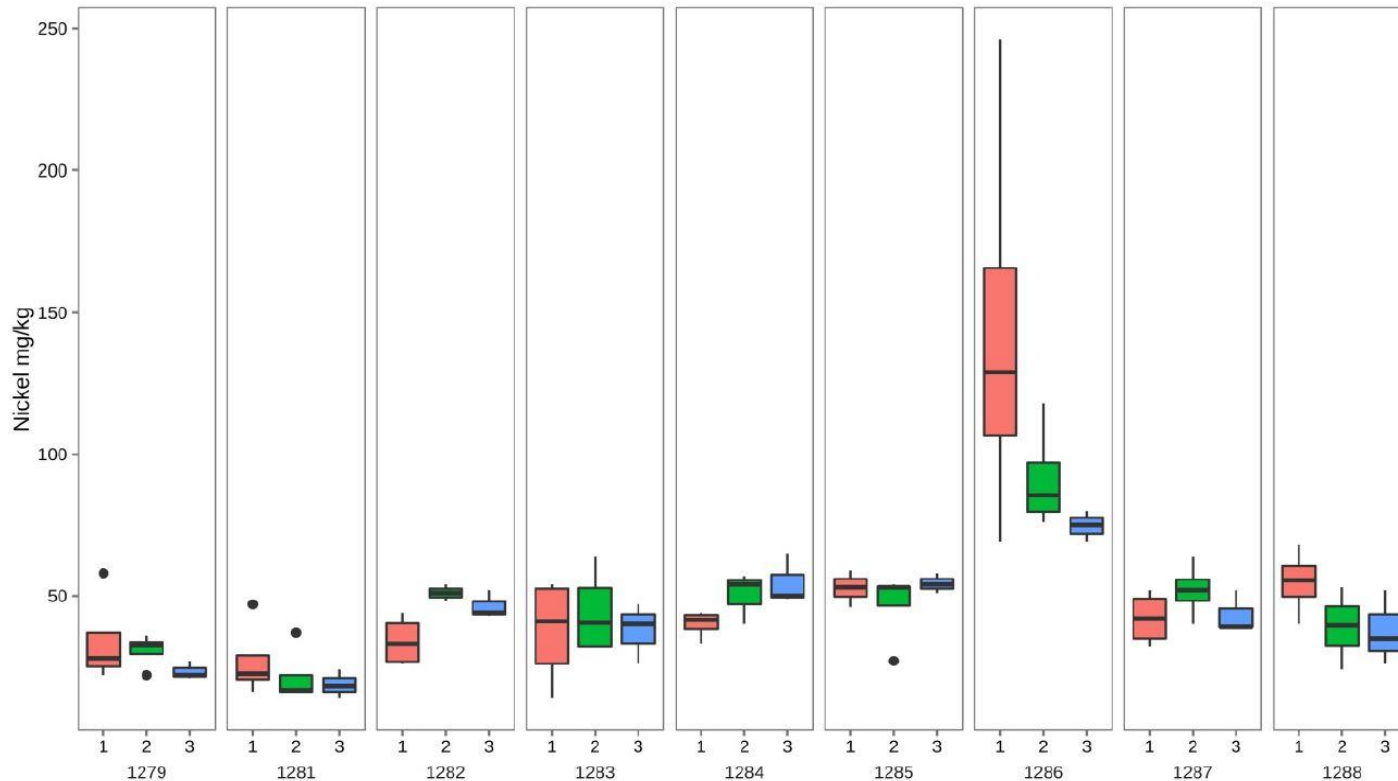
3 sediment samples were collected at 3 points along the Merri Creek.



Passive Sampling

10 'Suspended Particle Samplers' were deployed into drainage pits across Campbellfield and Craigieburn. These were replaced weekly, for four weeks. Sampling took place in April, August & October.

3 sediment samples were collected at 3 points along the Merri Creek.



Passive Sampling

10 'Suspended Particle Samplers' were deployed into drainage pits across Campbellfield and Craigieburn. These were replaced weekly, for four weeks. Sampling took place in April, August & October.

3 sediment samples were collected at 3 points along the Merri Creek.

	ISQG- Low	ISQG – High	1289		1290		1291	
			Before	After	Before	After	Before	After
Arsenic	20	70	<5	132	<5	<5	<5	7
Cadmium	1.5	10	<1	<1	<1	<1	<1	<1
Chromium	80	370	46	42	65	92	56	67
Copper	65	270	110	468	371	53	127	172
Lead	50	220	32	34	67	23	82	118
Mercury	0.15	1	<0.1	<0.1	<0.1	<0.1	0.2	0.3
Nickel	21	52	31	30	39	48	41	52
Silver	1	3.7	<2	<2	<2	<2	9	21
Zinc	200	410	1,810	1,240	1,480	335	1,770	2,450
TPH	280	550	14,400	6,800	30,600	1,030	8,650	15,500

Project Successes

- Stormwater monitoring showed that the CCEB program was associated with some improvements in stormwater quality.
- Collaboration! Planning Enforcement, Local Laws, Waste, Drainage, Research, Engineering, Statutory Planning, Melbourne Water, CAPIM, EPA, Local Government...
- The industrial business community is more engaged in the planning process, advocating for environmental protections.
- Face-to-face education gave the industrial community the opportunity to raise general concerns with Council.



Project Challenges



- Industry-specific flyers may improve understanding.
- Flyers showing site remediation and pollution prevention products like spill kits and sediment filters may improve uptake of solutions.
- Formal training in a classroom setting was not so effective for this community – difficulties for small business to disrupt activities.
- Education alone does not always result in businesses committing to better site management – enforcement may be required.

Where To Now?

- Continued engagement in three additional 'hotspots' in Campbellfield and Craigieburn, to improve water quality in both Merri Creek and Merlynston Creek.
- Ongoing collaboration with Planning Enforcement and other Council departments, agencies and Local Government.
- Development of further educational materials.
- Continued advocacy and knowledge transfer.

